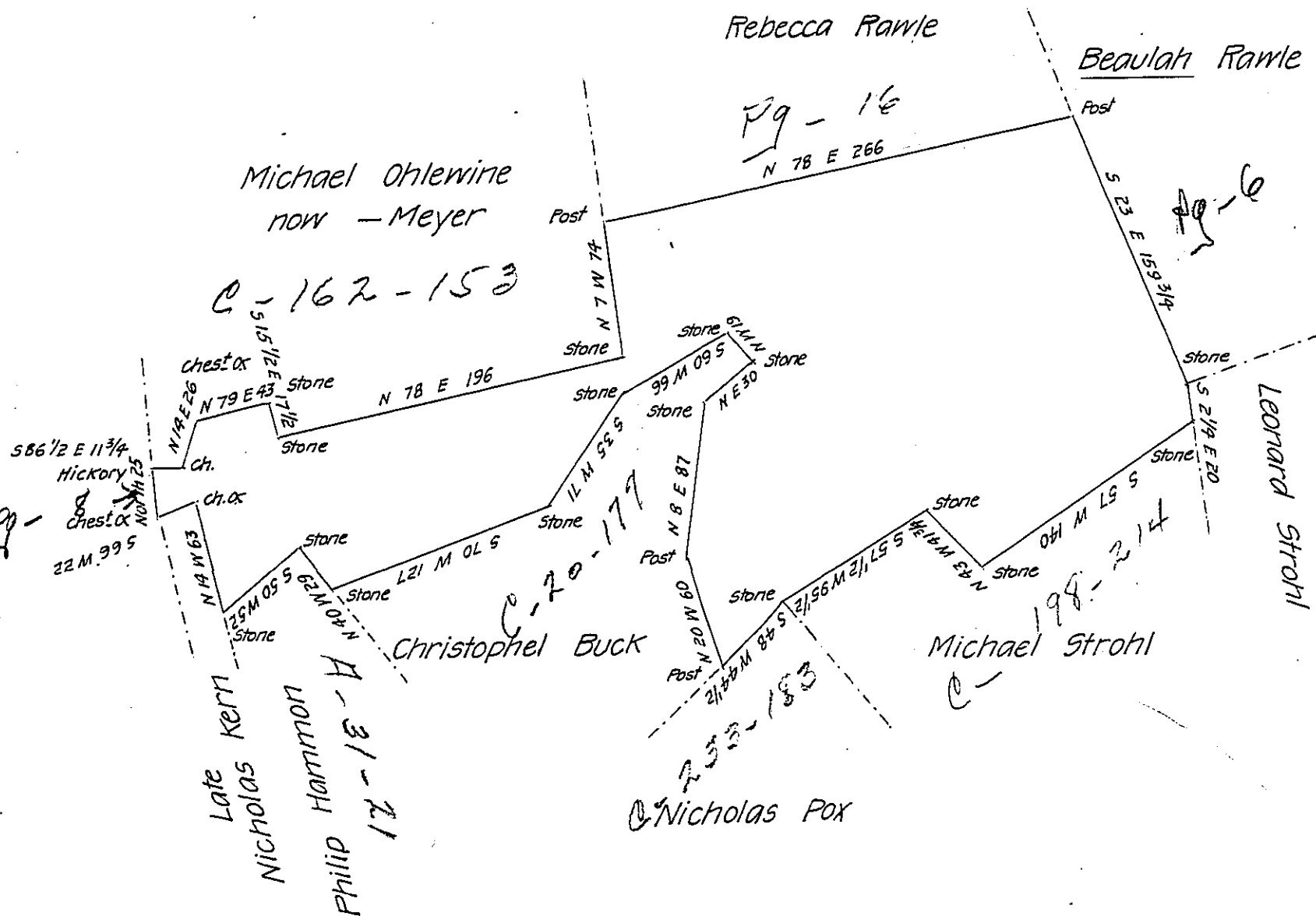


Land applied for by Thomas Craig



By virtue of a warrant dated the 26 July 1792 Surveyed the
 28th April 1794 to William Rawle jun^r the above described tract
 of land situate in Towamensing Township Northampton County
 Containing four hundred and forty acres an half and the allow-
 ance of six P. cent &c^a

P-Geo. Palmer D.S.

To Daniel Brodhead Esquire
 Surveyor General.

IN TESTIMONY that the above is a copy of the original remaining on file in
 the Department of Internal Affairs of Pennsylvania, made
 conformably to an Act of Assembly approved the 16th day of
 February, 1833, I have hereunto set my Hand and caused
 the Seal of said Department to be affixed at Harrisburg,
 this tenth day of October 1906.

Loac R Brown
 Secretary of Internal Affairs.